



February 5, 2021

The Friday Page

Join the list at webstergroves.org/thefridaypage

The Friday Page is published at the end of each week online at www.webstergroves.org/thefridaypage and is distributed to subscribers via webstergroves.org/notifyme.

Congratulations to the WU Chess Team!

Webster University has been home to an award-winning chess team since 2012 when Susan Polgar, once the top-ranked female chess player in the world, arrived on campus. This year Webster's chess team took first place in the 2021 Pan-American Intercollegiate Chess Competition – the foremost college chess tournament in the Americas. Coming in first among 59 teams that competed on line is cause for recognition and honor in the chess world.



Webster Groves is home to chess students from around the world and we are delighted to have these earnest, super smart young people be a part of our community. We wish them well as they continue their passion for chess and integrate the game in their future careers and congratulate Susan Polgar for bringing such recognition to the University.

Property Reassessments Begin

The St. Louis County Assessor's office conducts County-wide reassessments of real property and business personal property every two years (in odd numbered years). Appraisers will begin commercial property inspections this month and continue throughout the spring. Appraisers will follow all applicable COVID-19 guidelines including wearing masks and social distancing. Every appraiser will also have their County ID badge visible to the public. Additional details, as well as contact information is available [online](#).

Explore Webster Groves

Do you need a recommendation for a fabulous new food offering for curbside pickup or indoor dining?

Do you want to pursue your dream of becoming an Olympic skater?

Are you looking for a Valentine's present or brunch?

Do you want to know the latest about new restaurant openings?

All of these and other questions can be answered on the Explore Webster Groves Facebook page where there are frequent posts on the latest news about businesses and other items of interest in Webster Groves. [Visit ExploreWG on Facebook](#)

Spring Forward

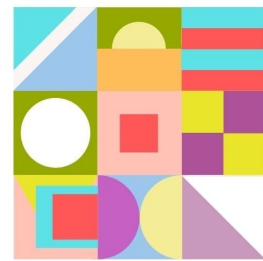
The Webster Groves Arts Commission, Webster Arts, and the Chamber of Commerce are producing Spring Forward, an opportunity for artists and would-be artists to create a public display of hope and new beginnings as we leave a very difficult year.

Participants will need to purchase a pre-cut plywood shape for \$25 to creatively paint, decorate, and embellish and return for display on the Eden campus during the first three weeks of March. Prizes will be awarded, and the art returned with participants urged to display their work in their own gardens and yards.

Visit www.webster-arts.org/spring-forward for details about this project including scholarship opportunities and a schedule for plywood pickup and art placement.

Spring
Forward

A PUBLIC ART INSTALLATION



PRESENTED BY:

