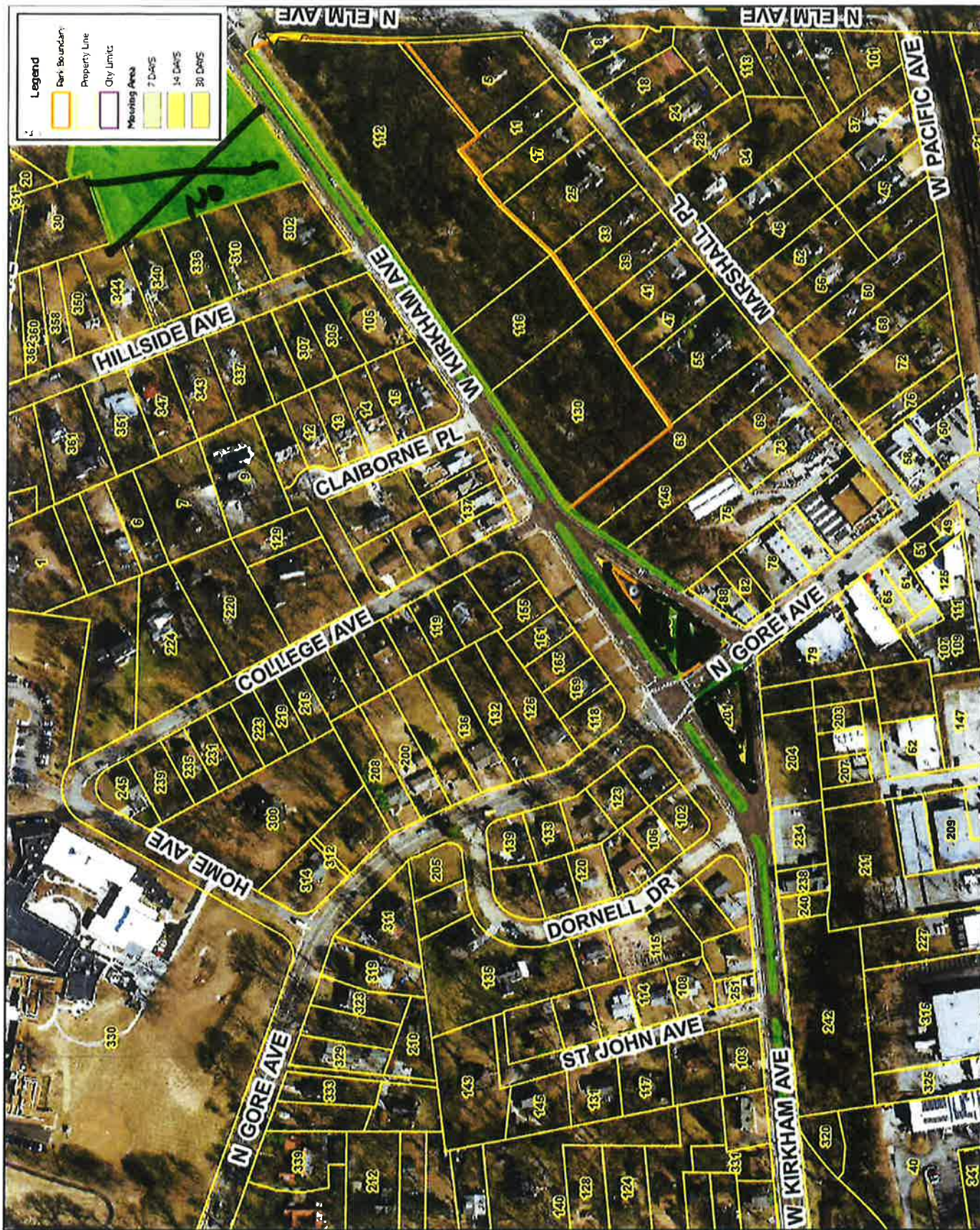




**DEPARTMENT OF PARKS AND RECREATION  
Mowing contract 2021**

**Bid Addendum #1**

- 1) When bidding the property known as W Kirkham Ave do not include the park area in green on the north east side of the property. See additional map with the area crossed out. Bid only the grass in the median and ROW.



Approximately .469 acres (20453 sq ft)

**W Kirkham Ave**